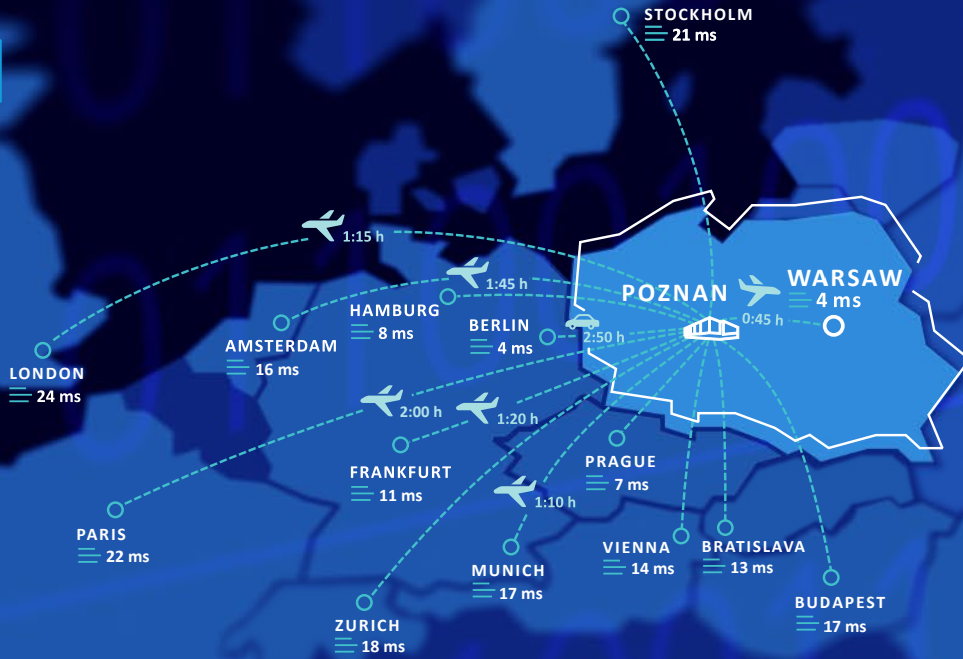


 **Campus Specification:**

Beyond.pl Campus Total Power	up to 150MW
Beyond.pl Campus Footprint	46,700 sqm with option to add 10,900 sqm
High Power Density	up to 140 kW/rack
PUE	1.2 (est. 1.15 for liquid cooling high density loads)
Renewable Energy	100% RES - contracted based on PPA models
Cooling	A/C cabinets and liquid cooling, including direct-to-chip, immersion cooling, and rear door cooling solutions
Existing capacities	up to 42MW (7x250 sqm data halls available within 12 months of customer order), 2 x data halls with height of 5,5m and 5 x data halls with height of 6,7m
Office Building	AAA standard, 2,680 sqm, 200+ workstations available of which 100 free
Logistics and Staging Area	1,100 sqm
Expansion	up to 78MW available within 24 months of customer order
Fire Safety	early fire detection system VESDA and gas fire extinguishing
Monitoring	24/7/365 CCTV monitoring
Heat Recovery	district heating option is being pursued of min. 30MW





WORLDWIDE CONNECTIVITY WITHIN YOUR REACH

Campus Location	Poznan, Poland (300 km to Berlin and Warsaw)
Connectivity	access to Tier 1 operators, connection to the largest European IX with optimal latency
Physical Security	24/7 on-site presence (with English and Polish language support)
Facility Management and Remote Hands	assist available and support by Microsoft's HoloLens technology (with English and Polish language support)
Certifications	ANSI/TIA-942 Rated 4 and EN 50600 Class 4 for active data halls; AI data halls will benefit from Rated 4 Campus infrastructure traits
Standards	SOC2 Type 1 and Type 2, PCI DSS, ISO 27001, ISO 14001, GDPR compliance
Experience	20 years on the market
Clients	500+ Polish and international companies

Partnerships



Polish Data Center Association



European Data Centre Association



Climate Neutral Data Center Pact



European Green Digital Coalition



VMware Zero Carbon Committed

